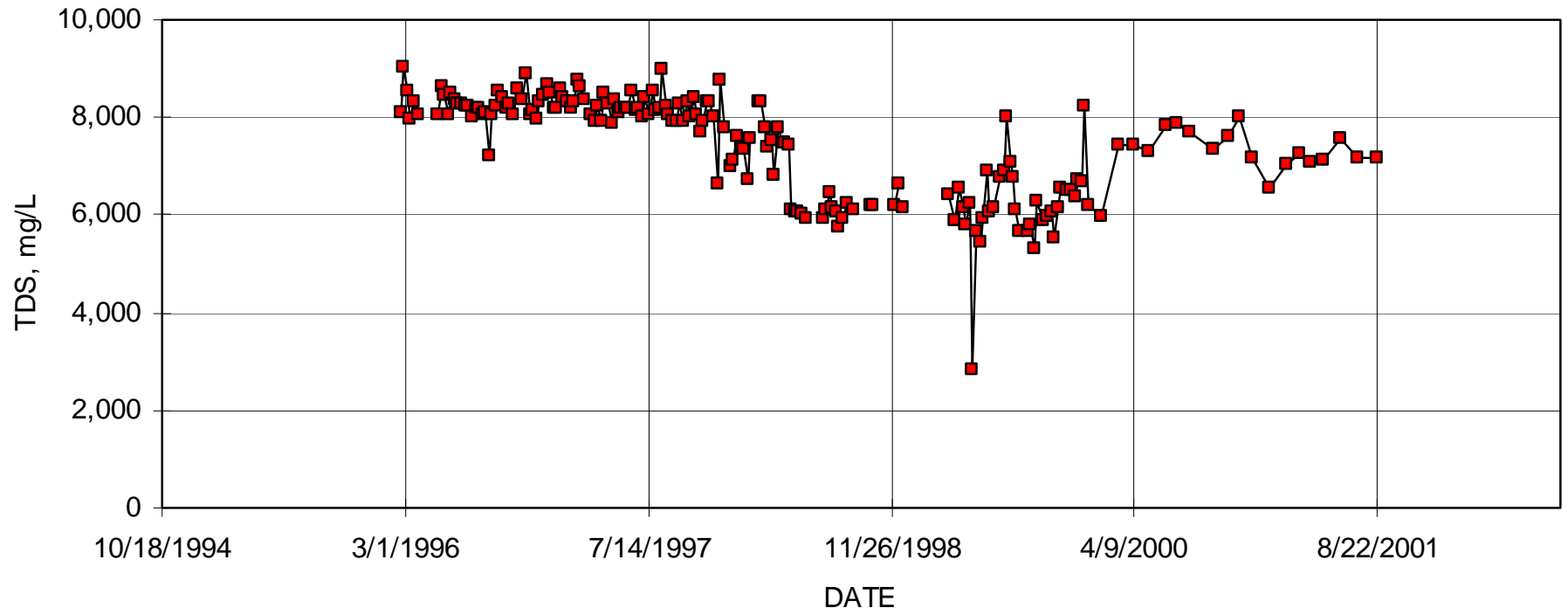
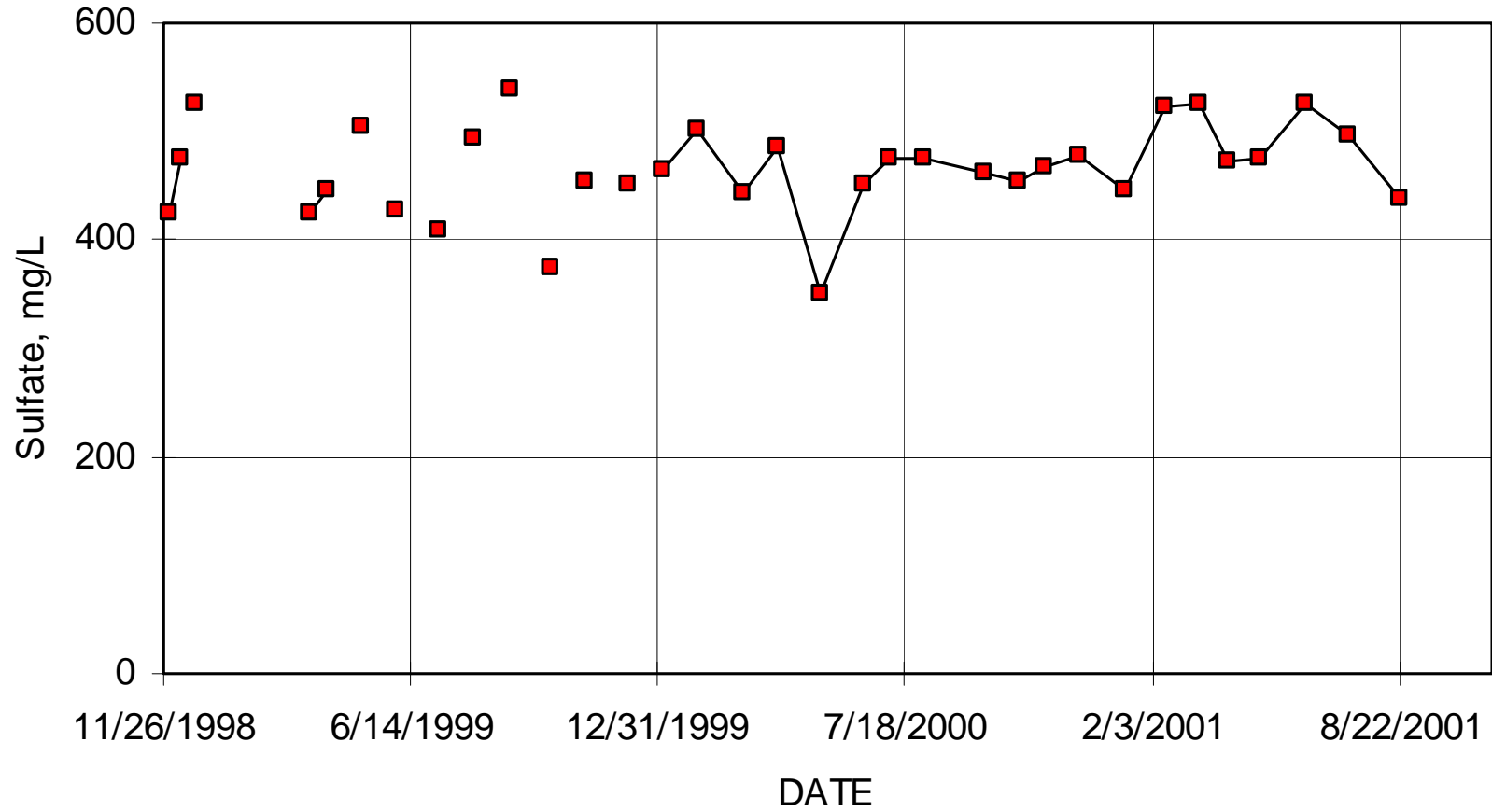


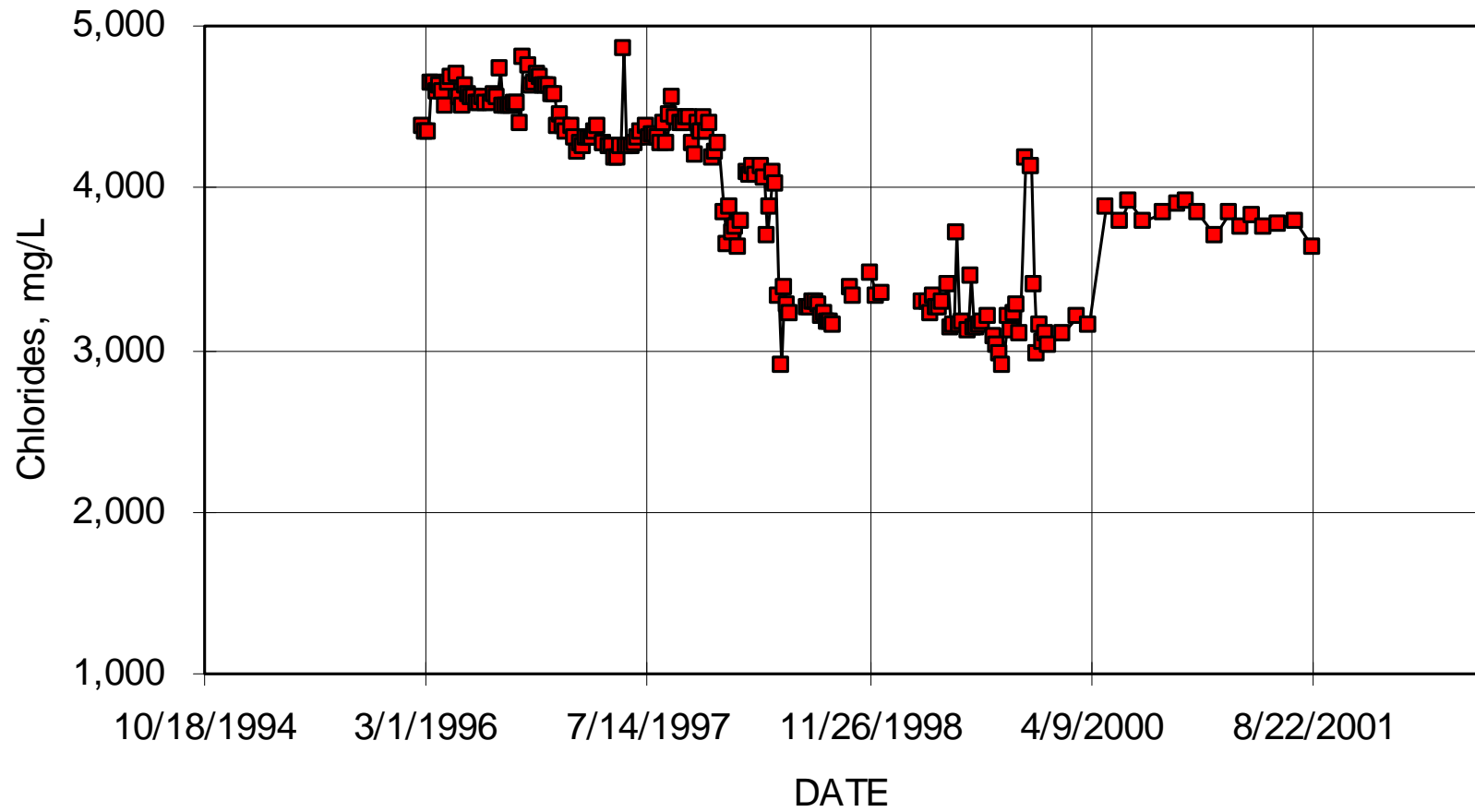
South District WWTP
Monitor Zone 15 Floridan Aquifer Upper (1,490 - 1,575 ft)



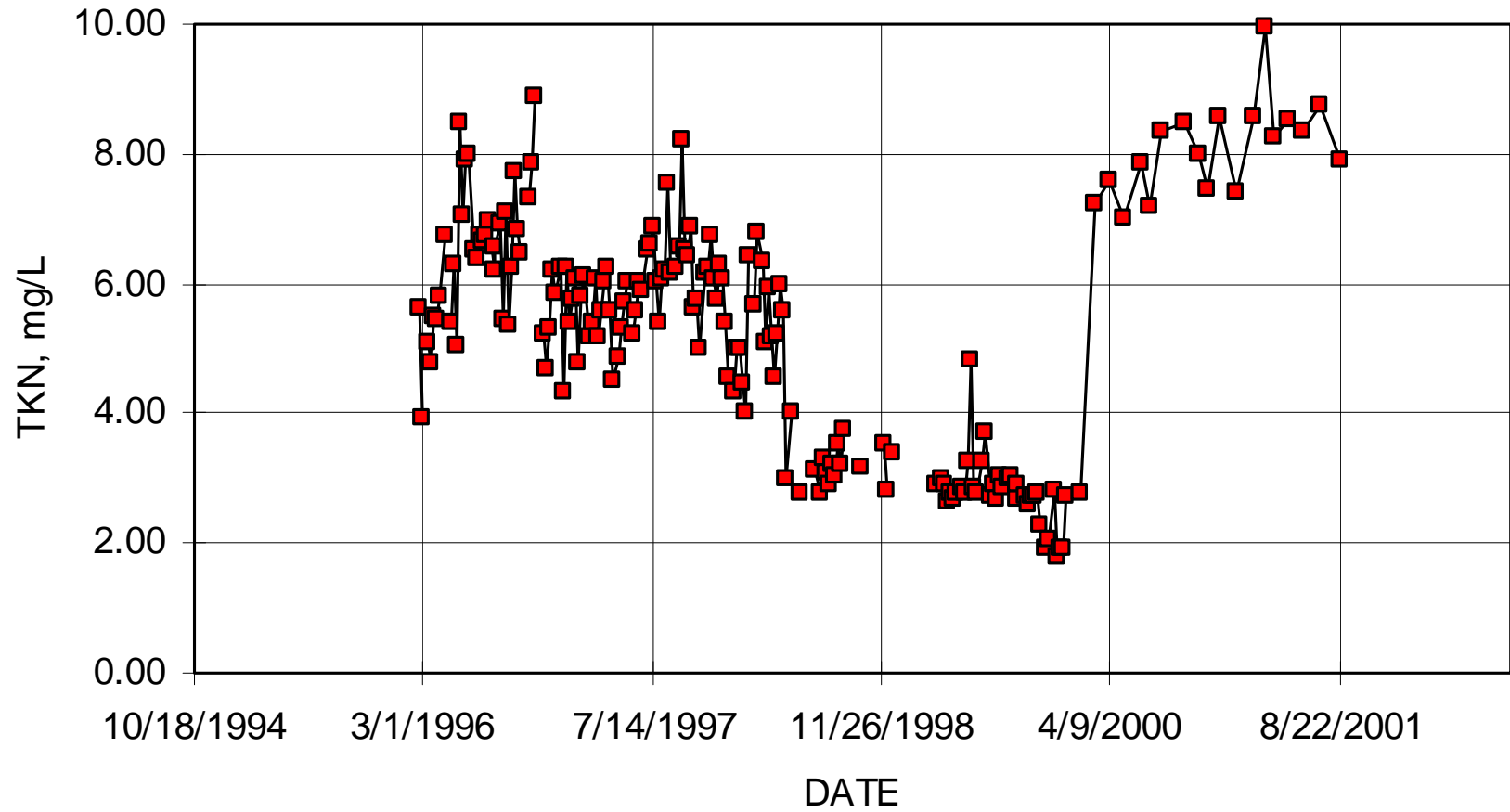
South District WWTP
Monitor Zone 15 Floridan Aquifer Upper (1,490 - 1,575 ft)



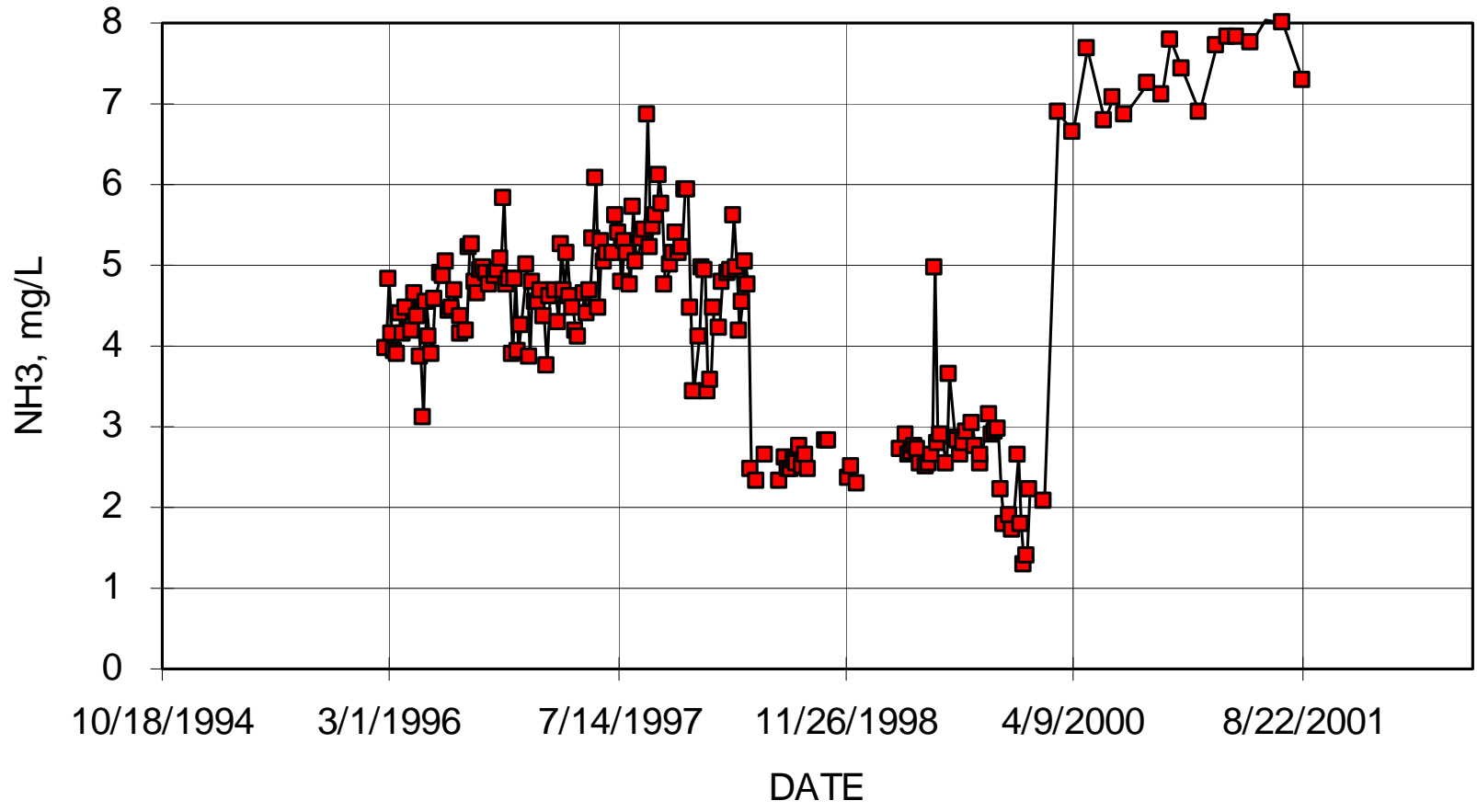
South District WWTP
Monitor Zone 15 Floridan Aquifer Upper (1,490 - 1,575 ft)



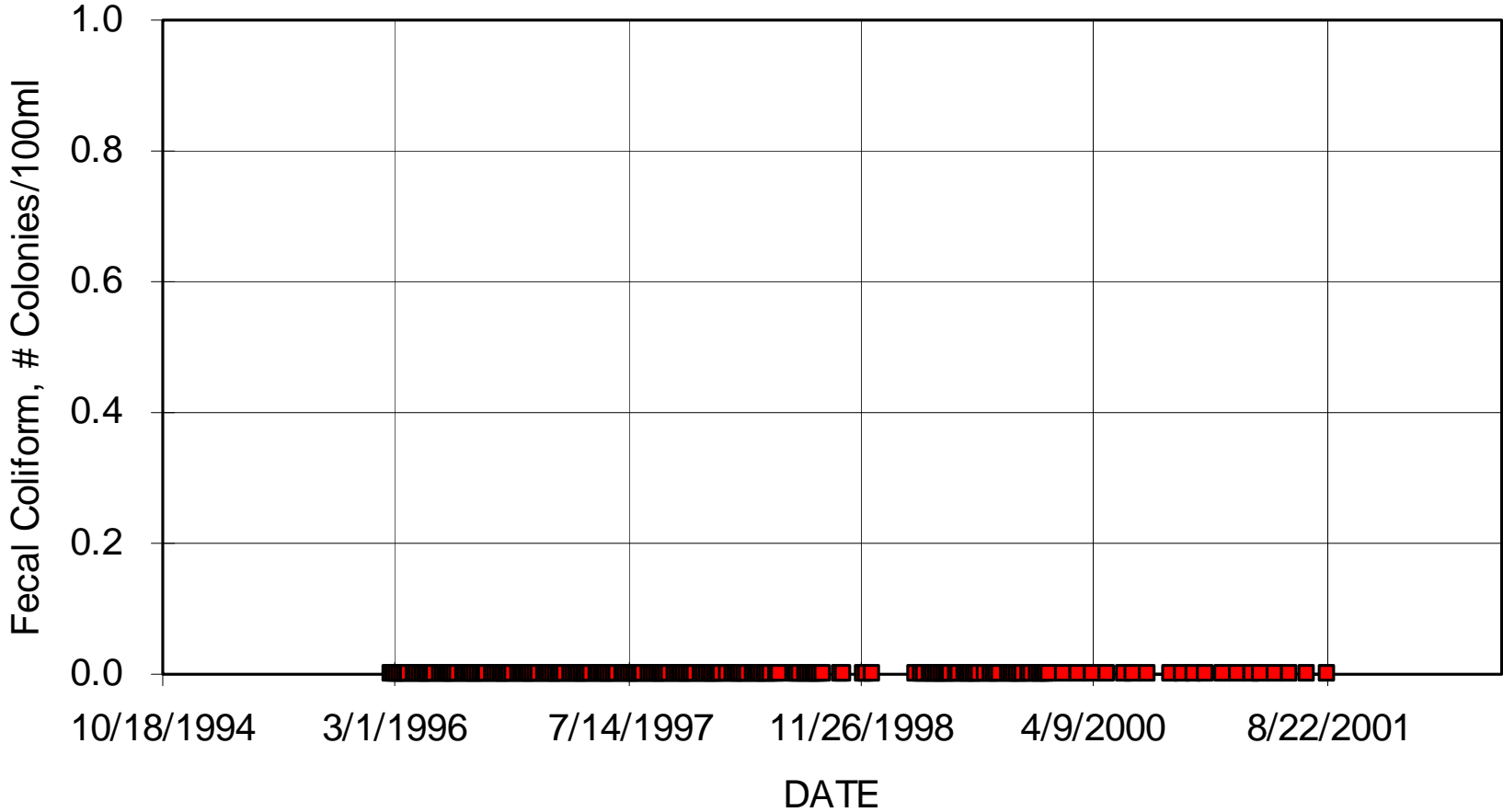
South District WWTP
Monitor Zone 15 Floridan Aquifer Upper (1,490 - 1,575 ft)



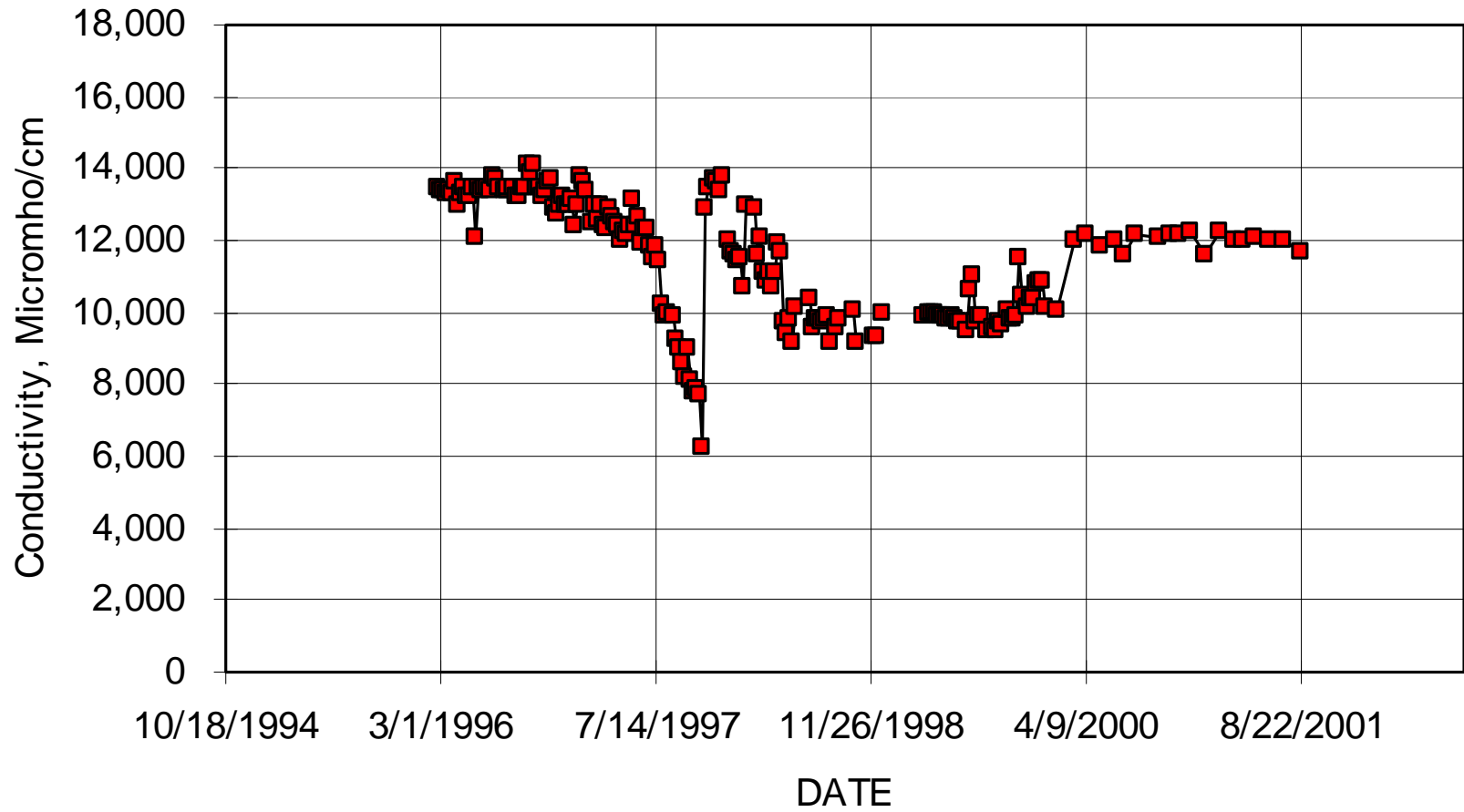
South District WWTP
Monitor Zone 15 Floridan Aquifer Upper (1,490 - 1,575 ft)



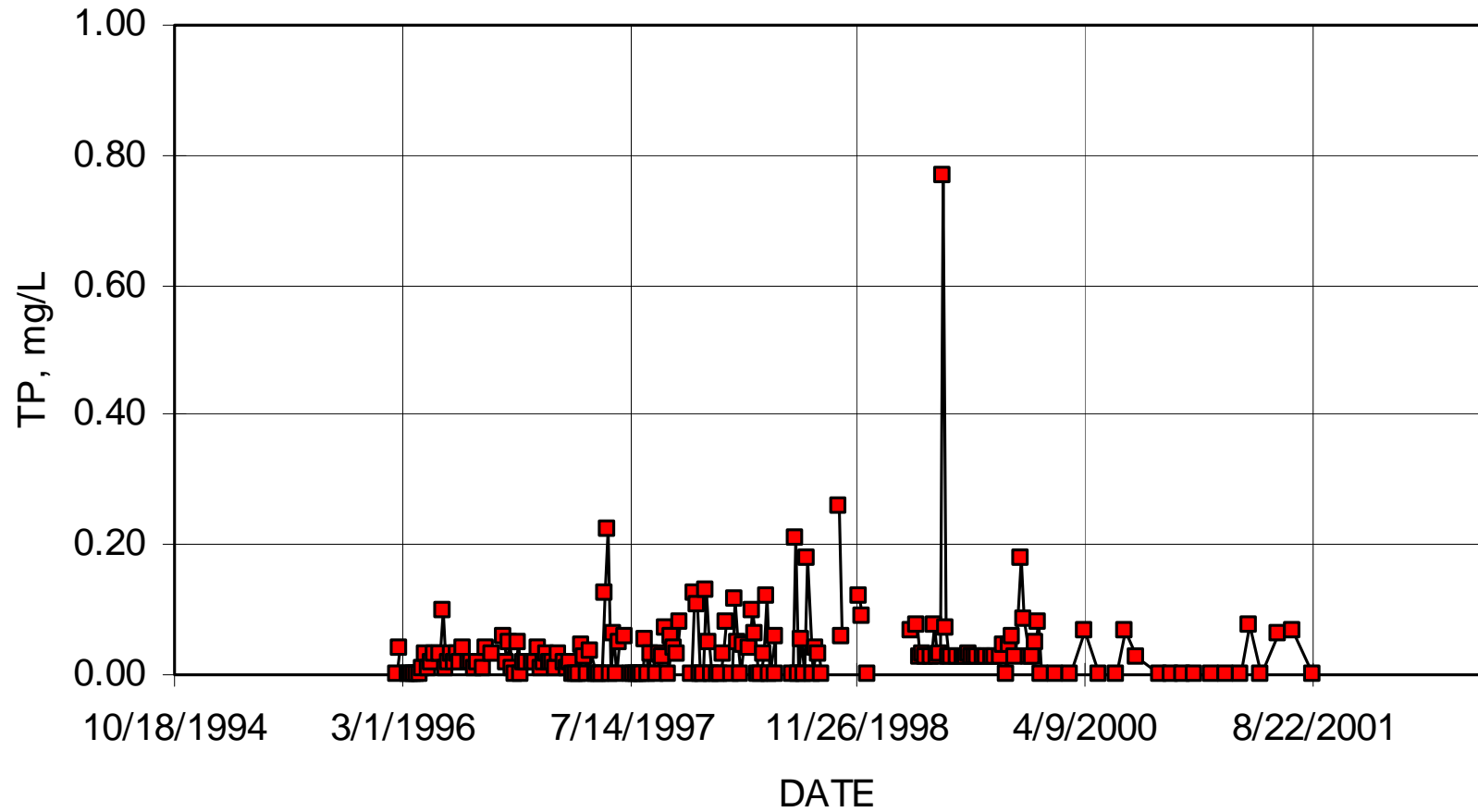
South District WWTP
Monitor Zone 15 Floridan Aquifer Upper (1,490 - 1,575 ft)



South District WWTP
Monitor Zone 15 Floridan Aquifer Upper (1,490 - 1,575 ft)



South District WWTP
Monitor Zone 15 Floridan Aquifer Upper (1,490 - 1,575 ft)



South District WWTP
Monitor Zone 15 Floridan Aquifer Upper (1,490 - 1,575 ft)

