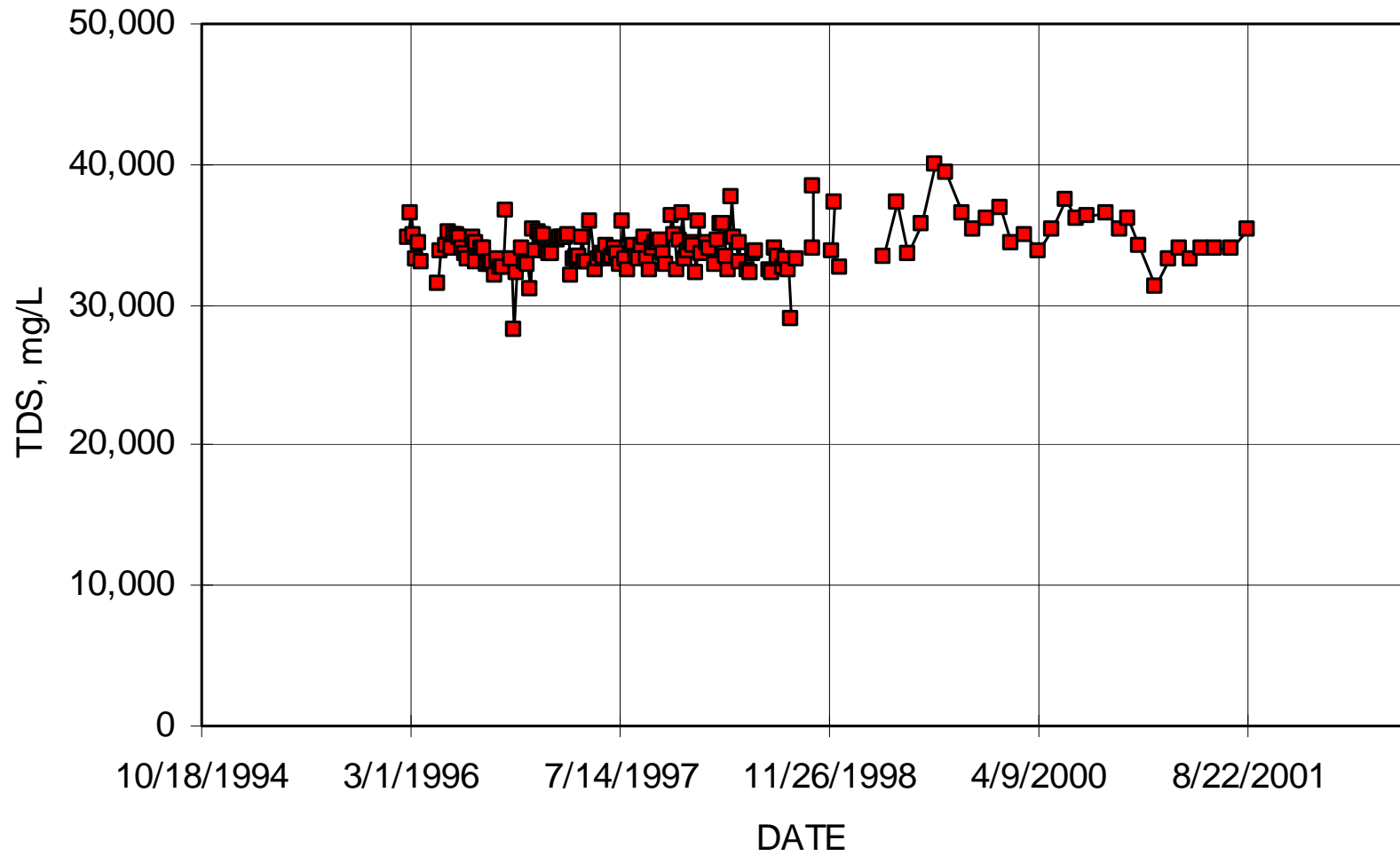
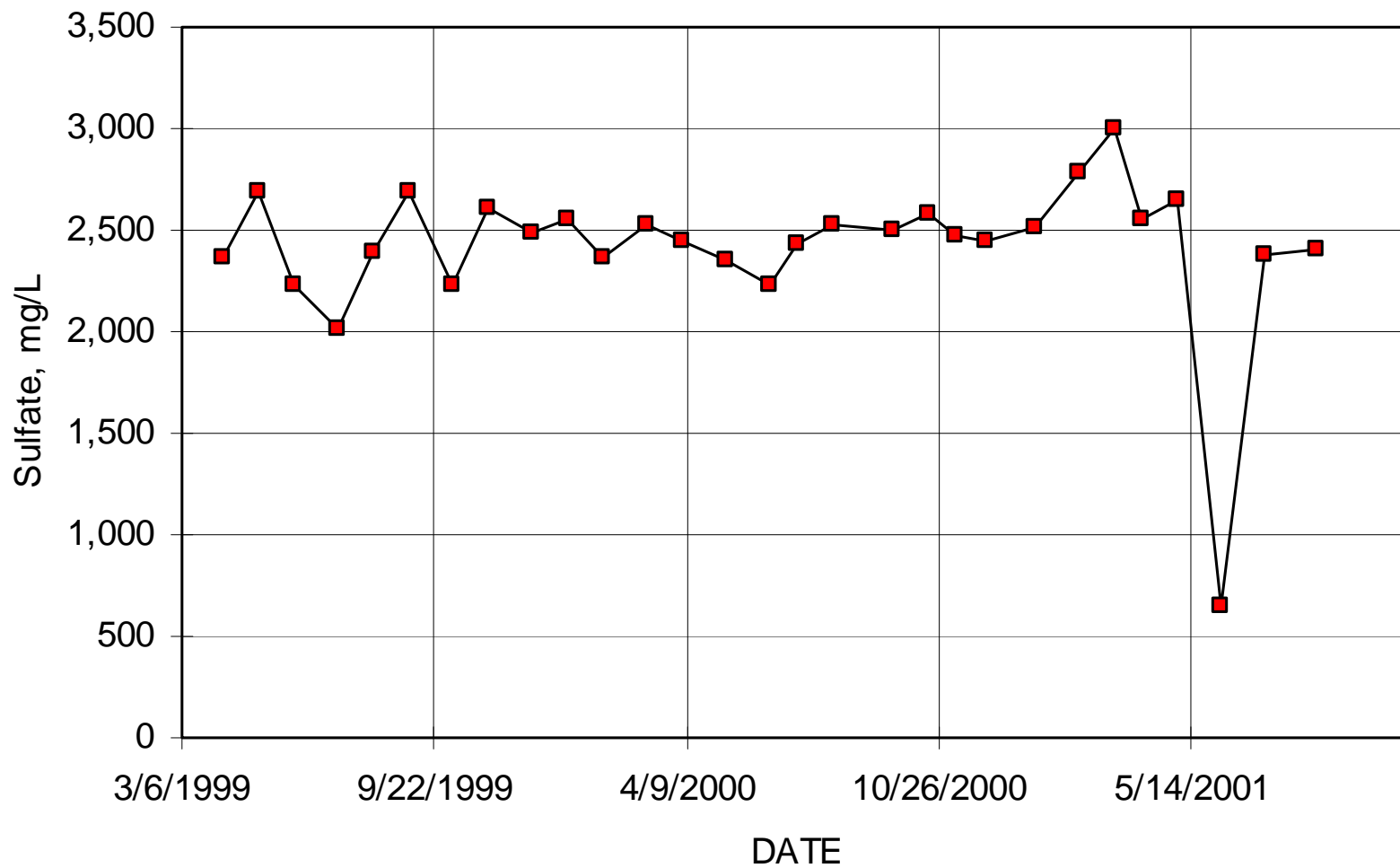


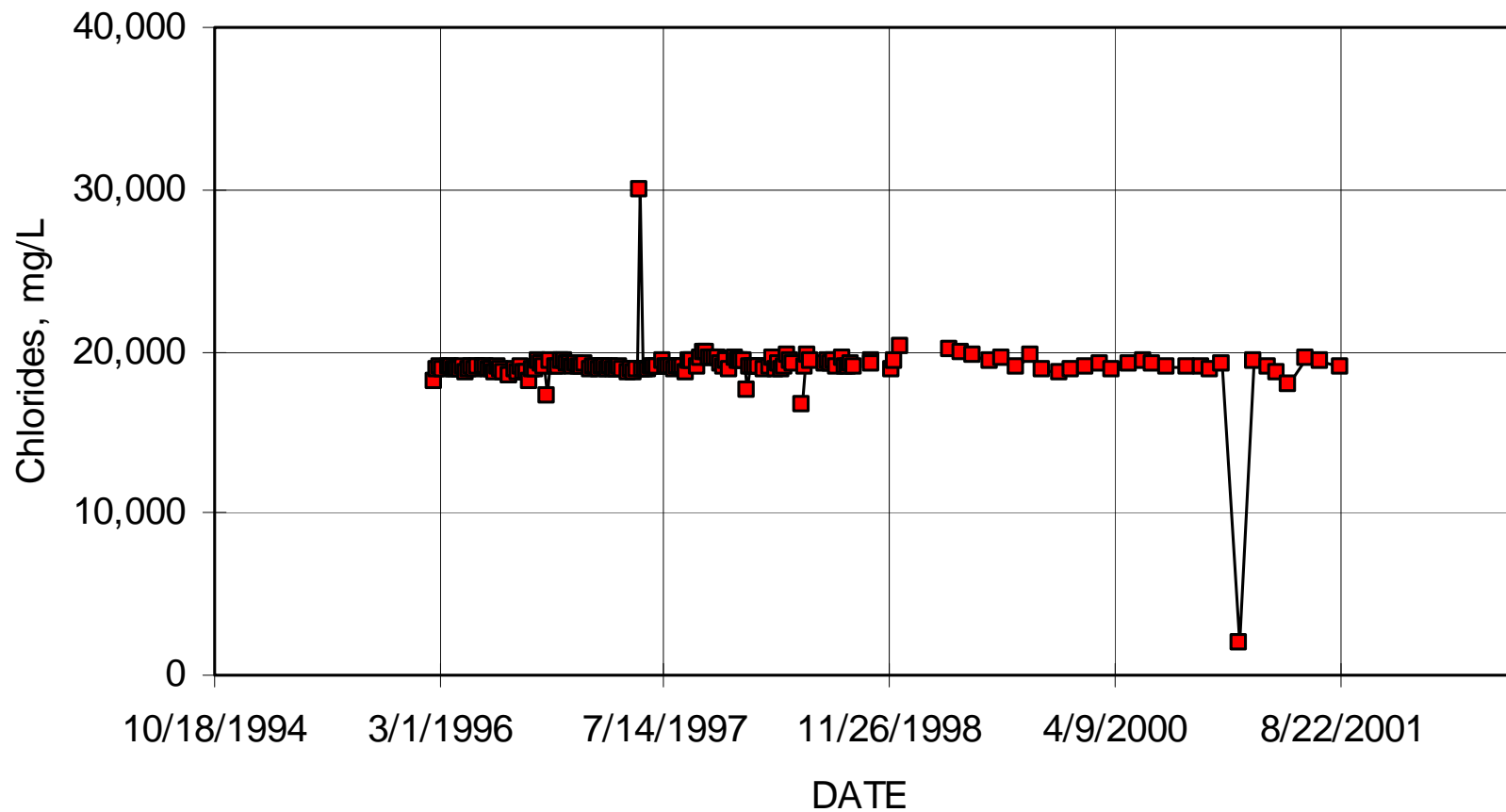
South District WWTP
Monitoring Zone 15 Floridan Aquifer Lower (1,790 -1,890 ft)



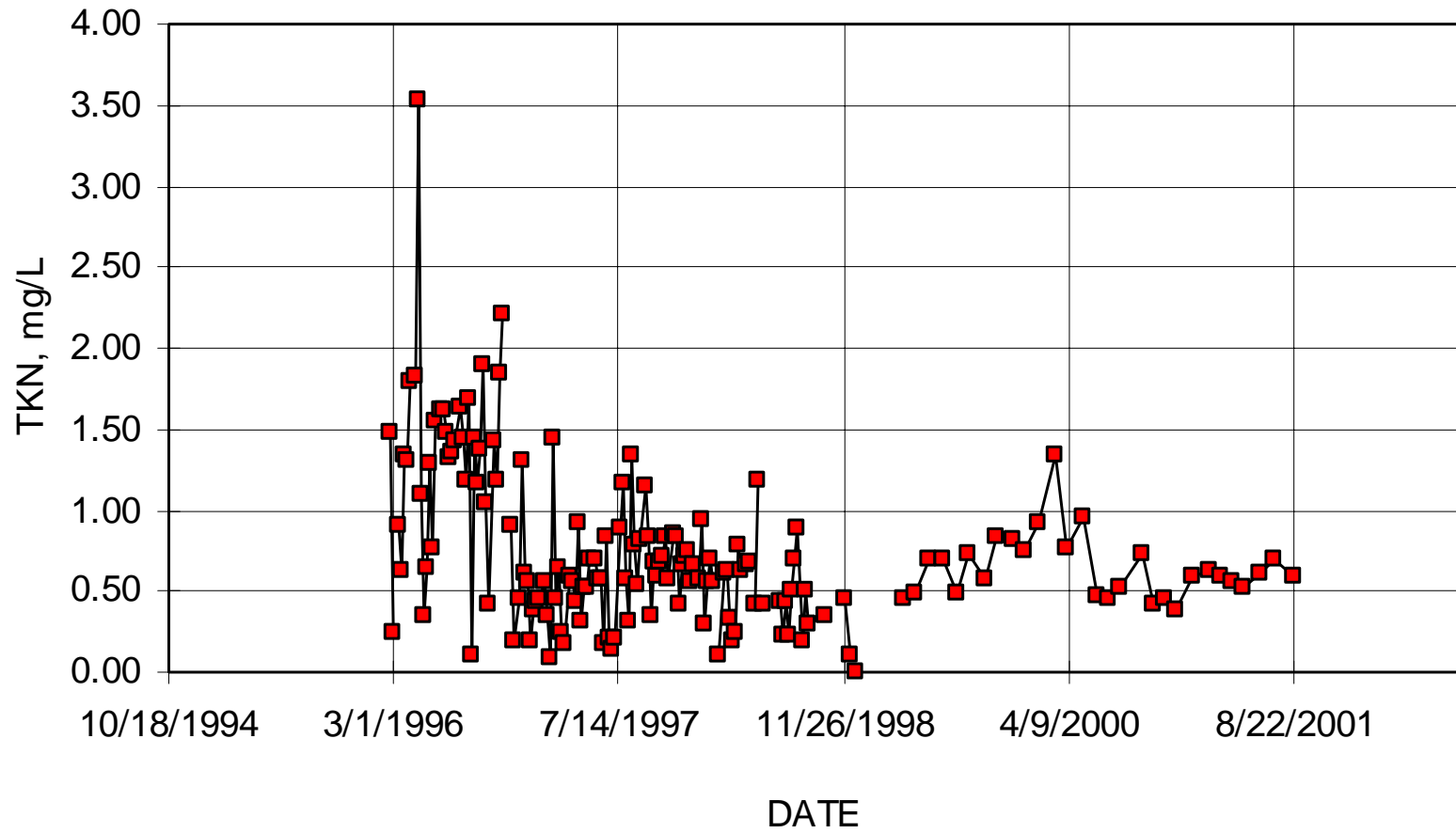
South District WWTP
Monitoring Zone 15 Floridan Aquifer Lower (1,790 -1,890 ft)



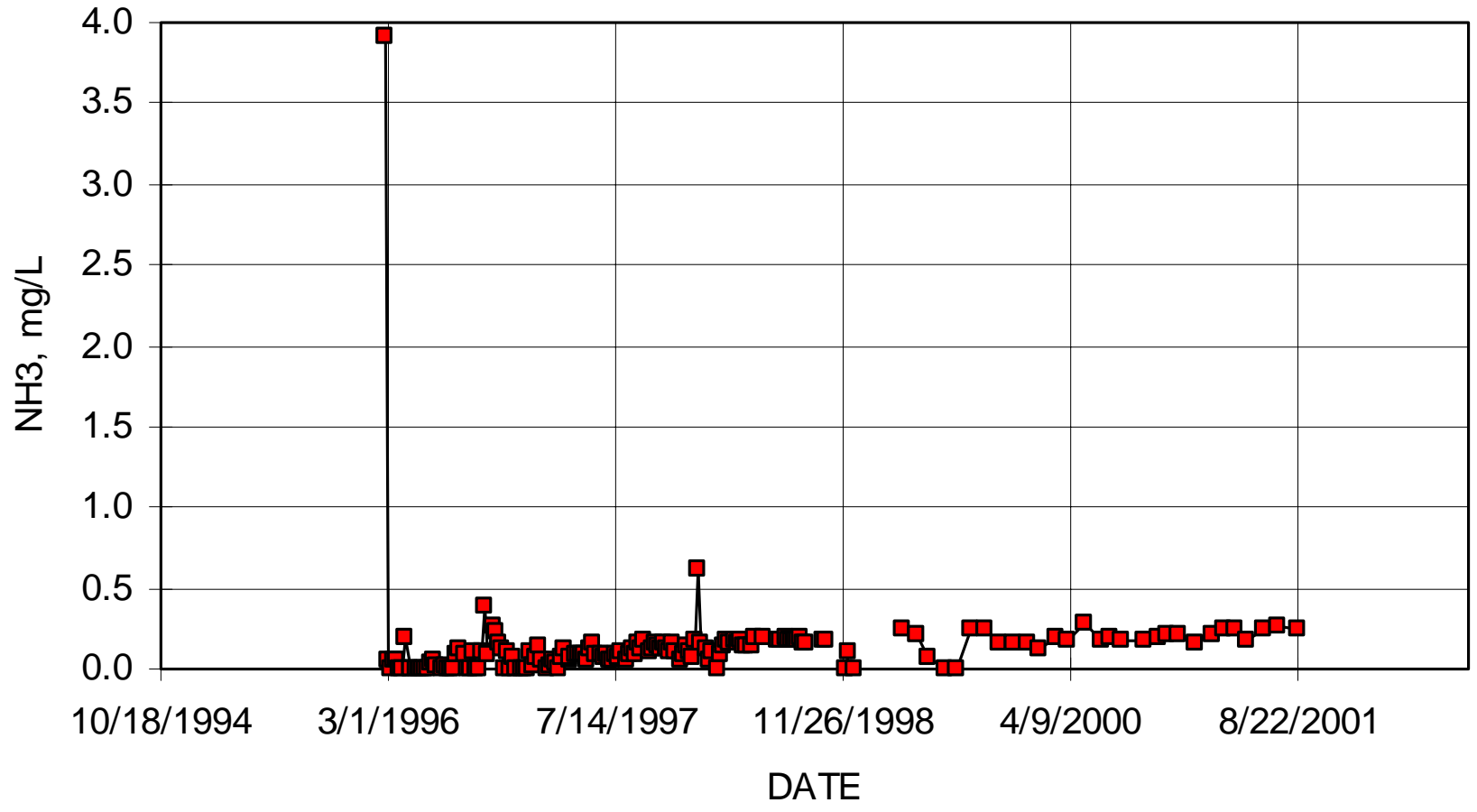
South District WWTP
Monitor Zone 15 Floridan Aquifer Lower (1,790 -1,890 ft)



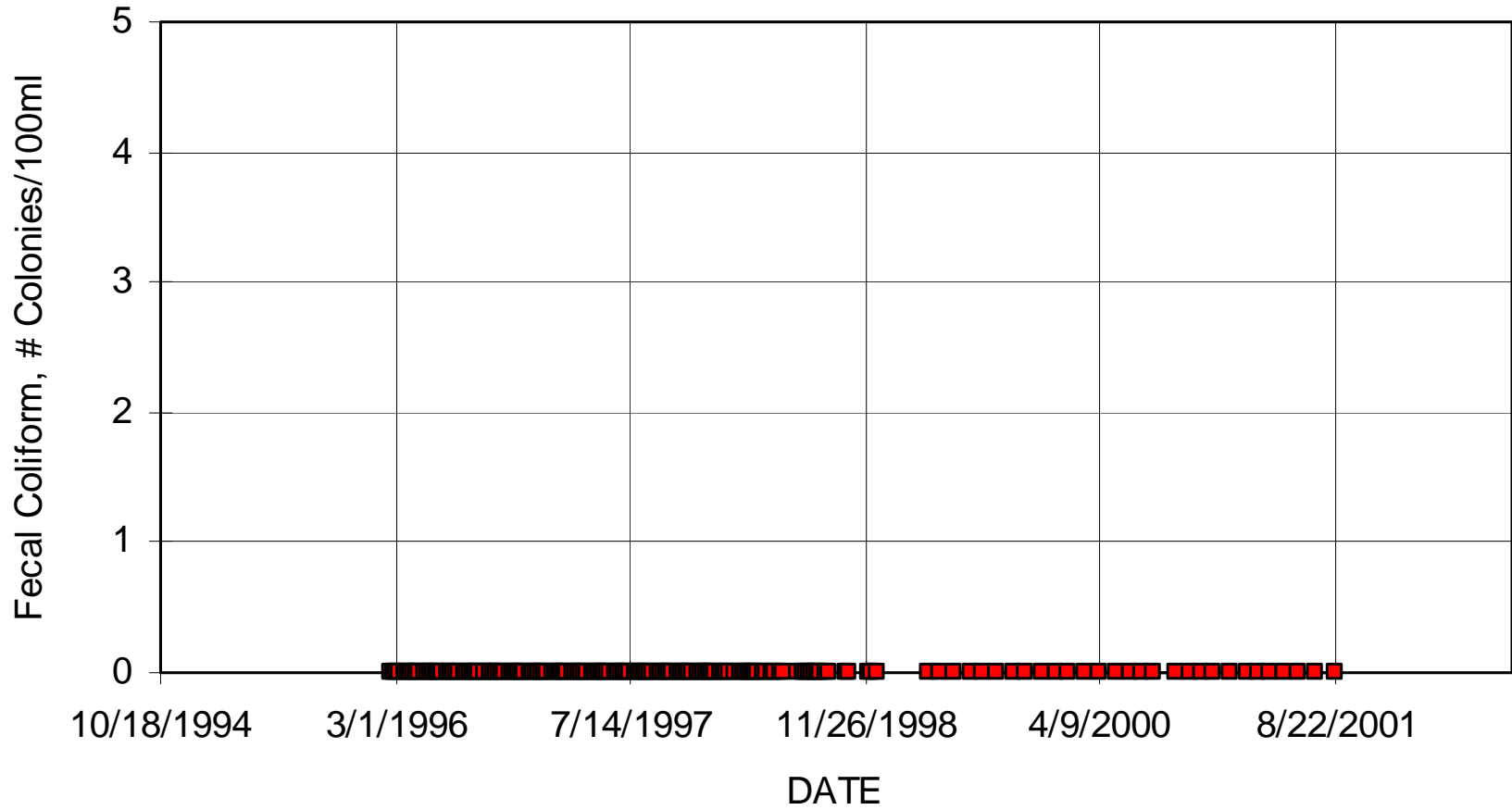
South District WWTP
Monitor Zone 15 Floridan Aquifer Lower (1,790 - 1,890 ft)



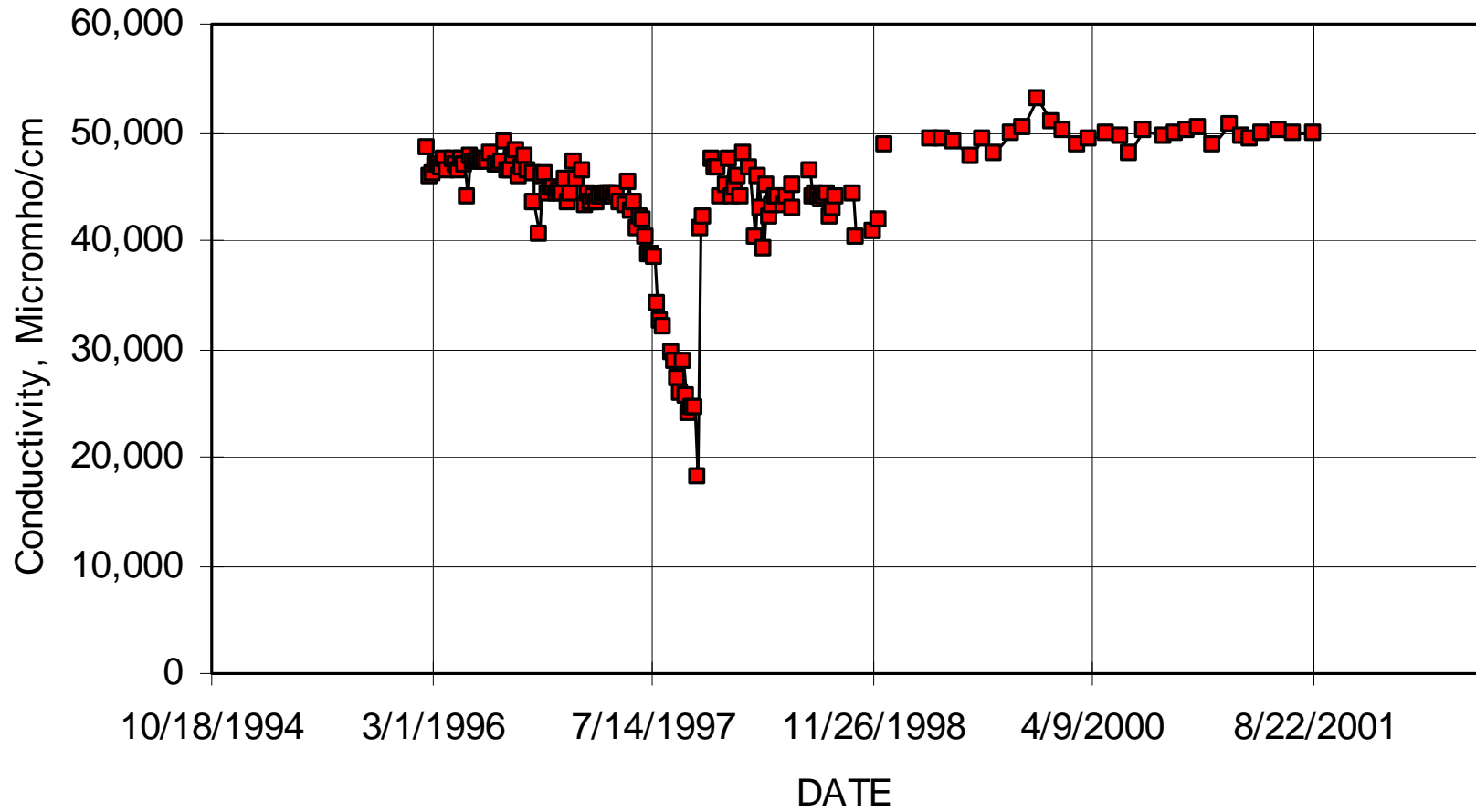
South District WWTP
Monitor Zone 15 Floridan Aquifer Lower (1,790 - 1,890)



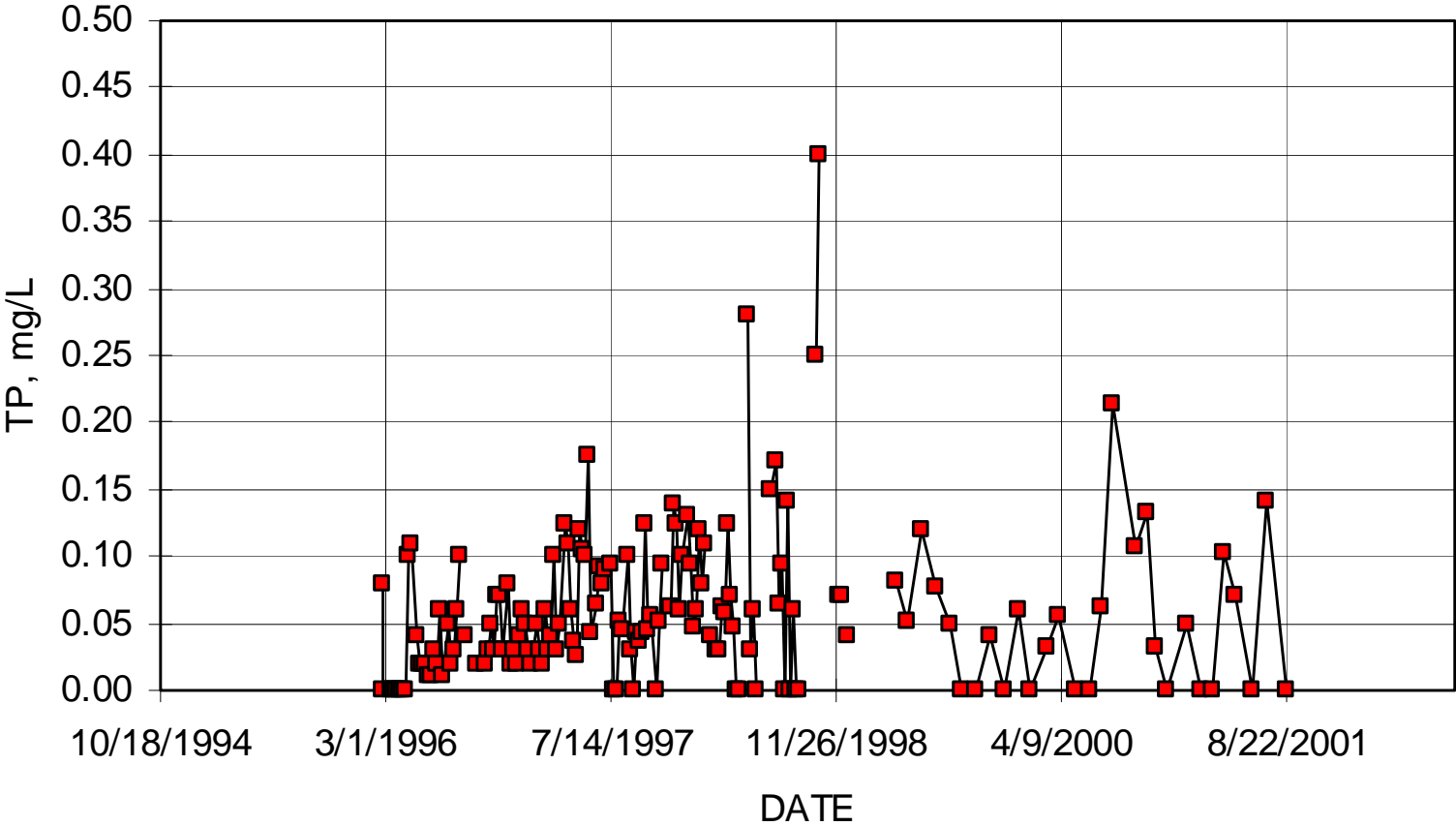
South District WWTP
Monitor Zone 15 Floridan Aquifer Lower (1,790 -1,890 ft)



South District WWTP
Monitor Zone 15 Floridan Aquifer Lower (1,790 - 1,890 ft)



South District WWTP
Monitor Zone 15 Floridan Aquifer Lower (1,790 -1,890 ft)



South District WWTP
Monitor Zone 15 Floridan Aquifer Lower (1,790 -1,890 ft)

